



Pitch.

Casual Events and Bookings

The Modern Way to Play.



Play

Even if you've never swung a club before, our built-in handicapping software levels the playing field—meaning the office pro can be humbled by a novice beginner. With a variety of fun and competitive golf games, there's something for everyone to enjoy.



Drink

From Spicy Margaritas, Triple Bogey Negronis and Pi-NO Coladas we have a varied cocktail list from our new menu to suit all tastes. Alternatively, try our organic wines or selection of refreshing craft and draught beers.



Eat

Feeling hungry? Enjoy food from our modern Asian kitchen, JIYŪ in Canary Wharf and Soho, or a hearty Italian pizza from Pizza Pilgrims at our City venue.



Enjoy

Pitch's slick design and carefully curated soundtrack provide the perfect setting for your evening. Enjoy our lounges both before and after your booking at no extra charge.



Unwind

Our spaces offer a versatile and dynamic environment, adaptable to a wide range of occasions. With a balance of stylish design and functional spaces, they provide the perfect backdrop to elevate any event.

Three. London. Clubs.

Pitch.Soho

Nestled down quiet Meard Street, our Soho Clubhouse is both a golfing sanctuary from the outside world and in the heart of the action. Spread over 8,000 sqft with nine versatile bays and a chic bar, it's a flexible events space offering so much more.

Pitch.City

A stone's throw from Liverpool Street on Bishopsgate, there's no better venue in the City than our original clubhouse. With eight bays, a bar and mezzanine lounge this club has it all.

Pitch.Wharf

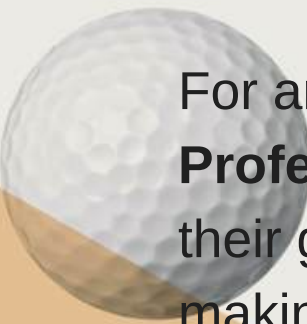
Our new flagship club spans 14,500 sqft and is designed for unforgettable events. With eleven bays, three shuffleboard tables, a bar, and a spacious outdoor terrace, it's the perfect setting for corporate gatherings, private parties, and summer socials.



Our Games

Experience the modern way to play golf with **virtual games** like Party Putt, Cannon Bowl, and Streets of Neon. Perfect for all skill levels, Trackman games offer challenges from precision tasks to fun showdowns like closest to the pin.

Elevate your event at Pitch with full or half-venue hire, offering activities like **shuffleboard, roulette, Nintendo Switch** on a 3m screen, and more.



For an added touch, enjoy expert coaching from our **PGA Professionals**—perfect for beginners or those looking to refine their game. Custom arcade games are also available on request, making it ideal for mixed-ability groups.



A large, light-colored wooden shuffleboard table is the central focus, set in a modern lounge. The table has a dark grey felt border and is equipped with blue and red pucks and a blue pusher. In the background, there's a bar with a tiled counter, a bookshelf, and a staircase with a metal railing. The ceiling features exposed pipes and industrial-style lighting. A framed black and white photograph of a person is mounted on the wall to the right.

Shuffleboard at Pitch Wharf

Alongside our interactive bays and vibrant social spaces, Pitch Wharf* is levelling up with the addition of **three shuffleboard tables!**

This exciting new addition brings more ways to compete, connect, and unwind. Perfect for elevating your events, shuffleboard adds a unique blend of strategy and social play to any occasion.

*only available at Canary Wharf



Outdoor Terrace at Pitch Wharf

Our outdoor terrace and downstairs bar offer a fantastic space for enjoying drinks in a relaxed yet vibrant atmosphere, perfect for after-work gatherings or social occasions during the summer months.



Pitch.

Private Area at Pitch Soho

The area includes an adaptable lounge area as well as 4 bays.
This is the perfect option if you are looking for the extra privacy to
entertain and host clients.





Mezzanine at Pitch City

A raised mezzanine overlooking the simulator bays with
a bar and relaxed seating area

Exclusive Venue Areas

Canary Wharf

- Full venue hire - capacity 400 - From £20,000 + VAT
- Half-venue hire (Upstairs or Downstairs) - capacity 220 - From £9,000 + VAT
- Small area hire - capacity 60 - From £3,000 + VAT
- Shuffleboard area hire - capacity 200 (if using outdoor terrace) - From £2,000 + VAT

Soho

- Full venue hire - capacity 200 - From £6,000.00 + VAT
- Clubhouse - capacity 130 - From £4,000.00 + VAT
- Private area hire - capacity 80 - From £2,000.00 + VAT

City

- Upstairs venue hire - capacity 80 - From £3,000.00 + VAT



Food & Drink



JiYŪ

Available exclusively at Canary Wharf and Soho, featuring a range of Asian inspired dishes.



Cocktails

Served at all of our Clubhouses, try our delicious cocktail menu.



Pizza

A great food option at our City clubhouse, providing the perfect course side snack.



Our Menu

Available at Canary and Soho



- = Large dish
- = Small dish
- = Dessert

- Sesame salted edamame* GF
- Togarashi potato wedges* GF
- Chicken karaage, kewpie mayo
- Spicy vegetarian dumplings, red chilli sauce*
- Spicy vegetable bao*
- Crispy duck spring rolls, hoisin sauce
- Chicken & mushroom dumplings, truffle soy
- Char sui pork bao
- Vegatable spring rolls*
- Chicken yakitori skewers
- Peanut butter brownie* GF
- Raspberry, almond and white chocolate slice

自由
自由

*Plant-based options



Canary Events Packages

Perfect for those regular team rewards or the more budget conscious. Our events packages cater for all.
Prices are inclusive of VAT

○ Off-Peak
● Peak



PAR

Two hours of games
Two house drinks
No food
Reservable area

£41pp - £45pp



BIRDIE

Two hours of games
Two house drinks
One 'JIYU' dish
Reservable area

£51pp - £55pp



EAGLE

Two hours of games
Two premium drinks
Two 'JIYU' dishes
Reservable area

£63pp - £67pp



ALBATROSS

Three hours of games
Three premium drinks
Three 'JIYU' dishes
Reservable area

£91pp - £95pp



ACE

Four hours of games
Four premium drinks
Three 'JIYU' dishes
Reservable area

£106pp - £110pp

*two prices show booking during Off-Peak/Peak times (Wednesday & Thursday)

Soho Events Packages

Perfect for those regular team rewards or the more budget conscious. Our events packages cater for all.
Prices are inclusive of VAT

○ Off-Peak
● Peak



PAR

Two hours of games
Two house drinks
No food
Reservable area

£41pp - £45pp



BIRDIE

Two hours of games
Two house drinks
One 'JIYŪ' dish
Reservable area

£51pp - £55pp



EAGLE

Two hours of games
Two house drinks
Two 'JIYŪ' dishes
Reservable area

£63pp - £67pp



ALBATROSS

Three hours of games
Three premium drinks
Three 'JIYŪ' dishes
Reservable area

£91pp - £95pp



ACE

Four hours of games
Four premium drinks
Three 'JIYŪ' dishes
Reservable area

£106pp - £110pp

City Events Packages

Perfect for those regular team rewards or the more budget conscious. Our events packages cater for all.
Prices are inclusive of VAT

○ Off-Peak
● Peak



PAR

Two hours of games
Two house drinks
No food
Reservable area
Use of mezzanine

£41pp - £45pp



BIRDIE

Two hours of games
Two house drinks
Half pizza
Reservable area
Use of mezzanine

£51pp - £55pp



EAGLE

Two hours of games
Two house drinks
Whole pizza
Reservable area
Use of mezzanine

£63pp - £67pp



ALBATROSS

Three hours of games
Three premium drinks
Whole pizza
Reservable area
Use of mezzanine

£91pp - £95pp



ACE

Four hours of games
Four premium drinks
Whole pizza & nibbles
Reservable area
Use of mezzanine

£106pp - £110pp

Included Drinks

Perfect for those regular team rewards or the more budget conscious. Our events packages cater for all.
Prices are inclusive of VAT



PAR

Bottled Beers
Single House Spirits
House Wines 125ml
Soft Drinks
Tea & Coffee



BIRDIE

Bottled Beers
Ciders
Single House Spirits
House Wines 125ml
Soft Drinks
Tea & Coffee



EAGLE

Pints of Beer
Bottled Beers
Ciders
Double House Spirits
House Wines 175ml
Soft Drinks
Tea & Coffee



ALBATROSS

Pints of Beer
Bottled Beers
Ciders
Double Premium Spirits
House Wines 175ml
House Cocktails
Prosecco
Soft Drinks
Tea & Coffee



ACE

Pints of Beer
Bottled Beers
Ciders
Double Premium Spirits
House Wines 250ml
House Cocktails
Prosecco
Soft Drinks
Tea & Coffee



Pitch.Events

Additional Upgrades

Bubbles on arrival

£10 pp

Cocktail list access

£12 pp

DJ hire for event

£150 ph

PGA Pro for event assistance

From £150 ph

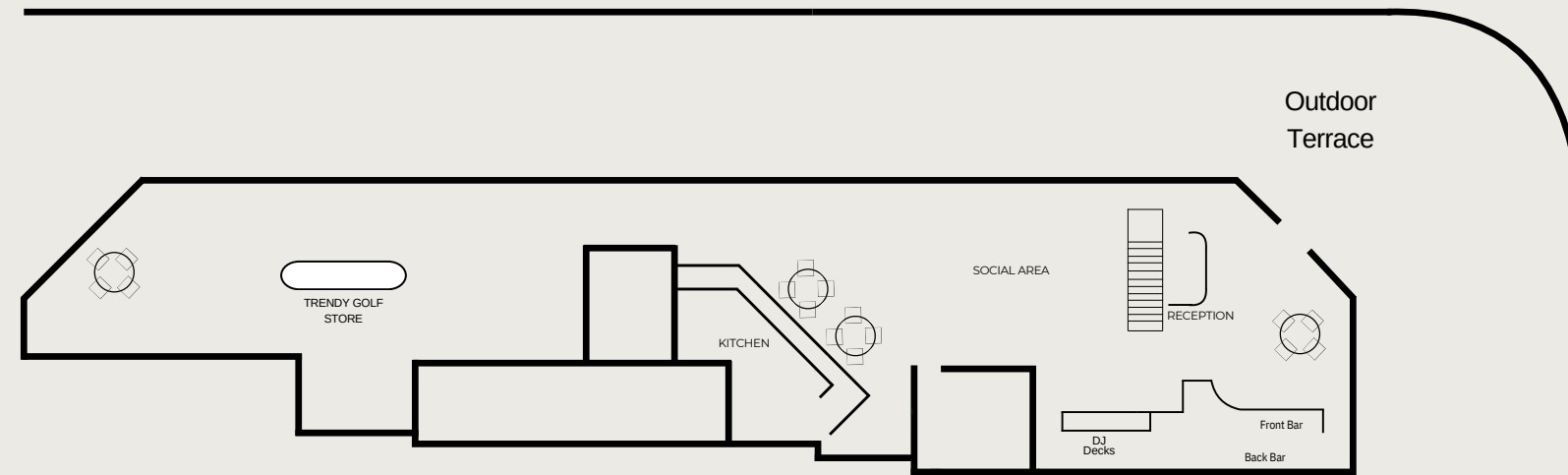
Additional dish per person

£9 pp

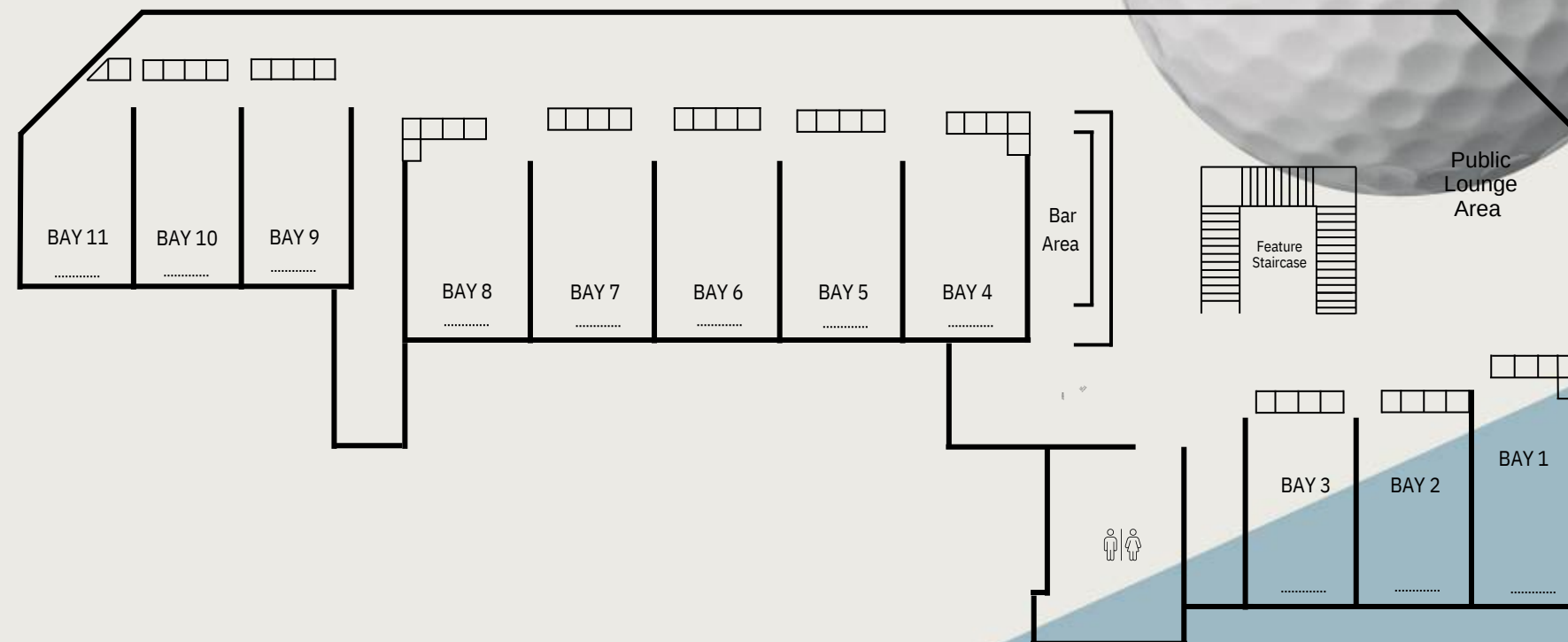


Canary Wharf Floorplan

Ground Floor



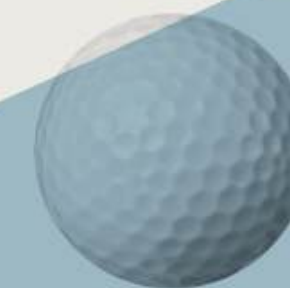
First Floor



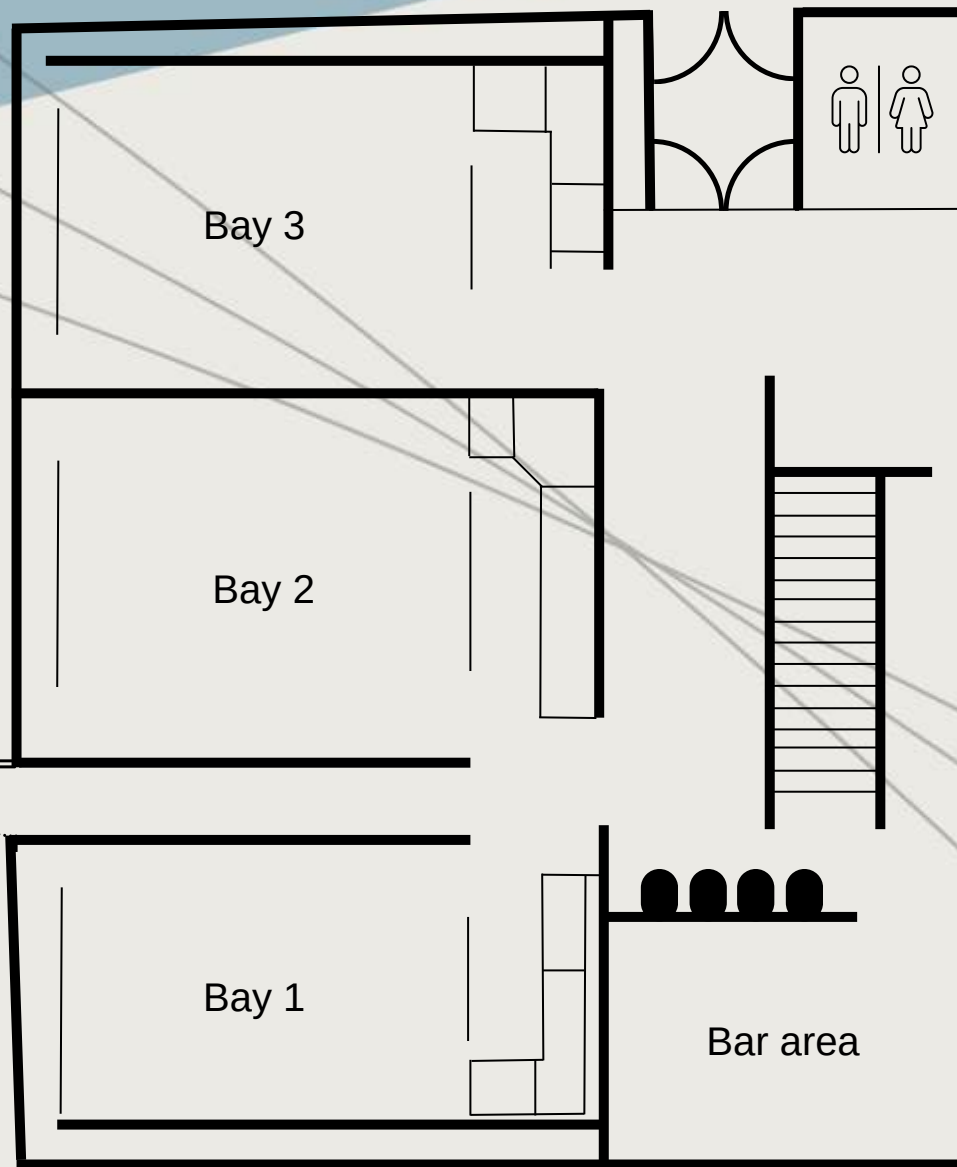
Covering 14,500 square feet, this state-of-the-art space includes:

- Eleven Trackman-powered bays
- An exclusive members' area
- Bar and a restaurant
- A Trendy Golf concept store
- Riverside terrace with seating
- Three Shuffleboards

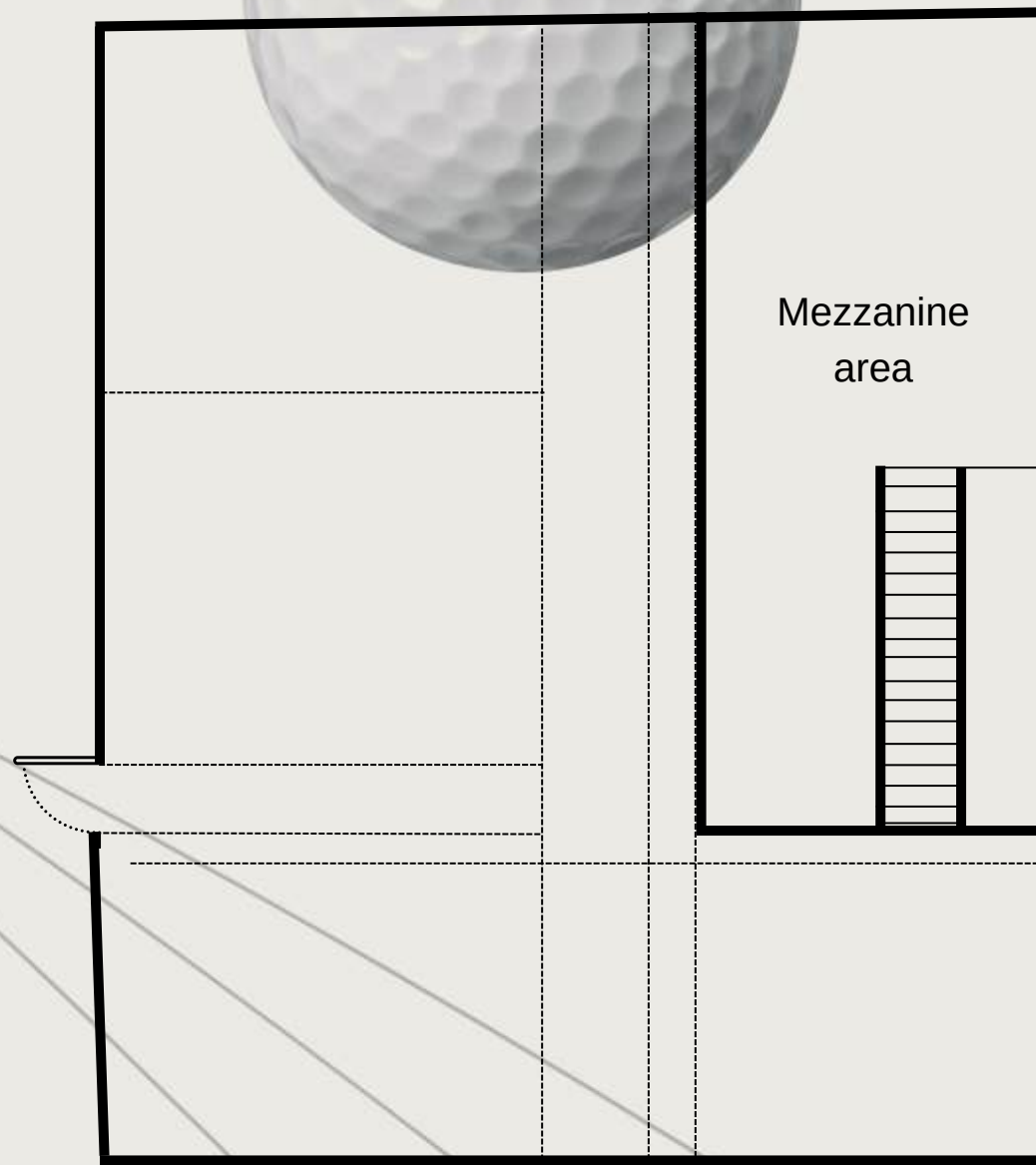
Soho Floorplan



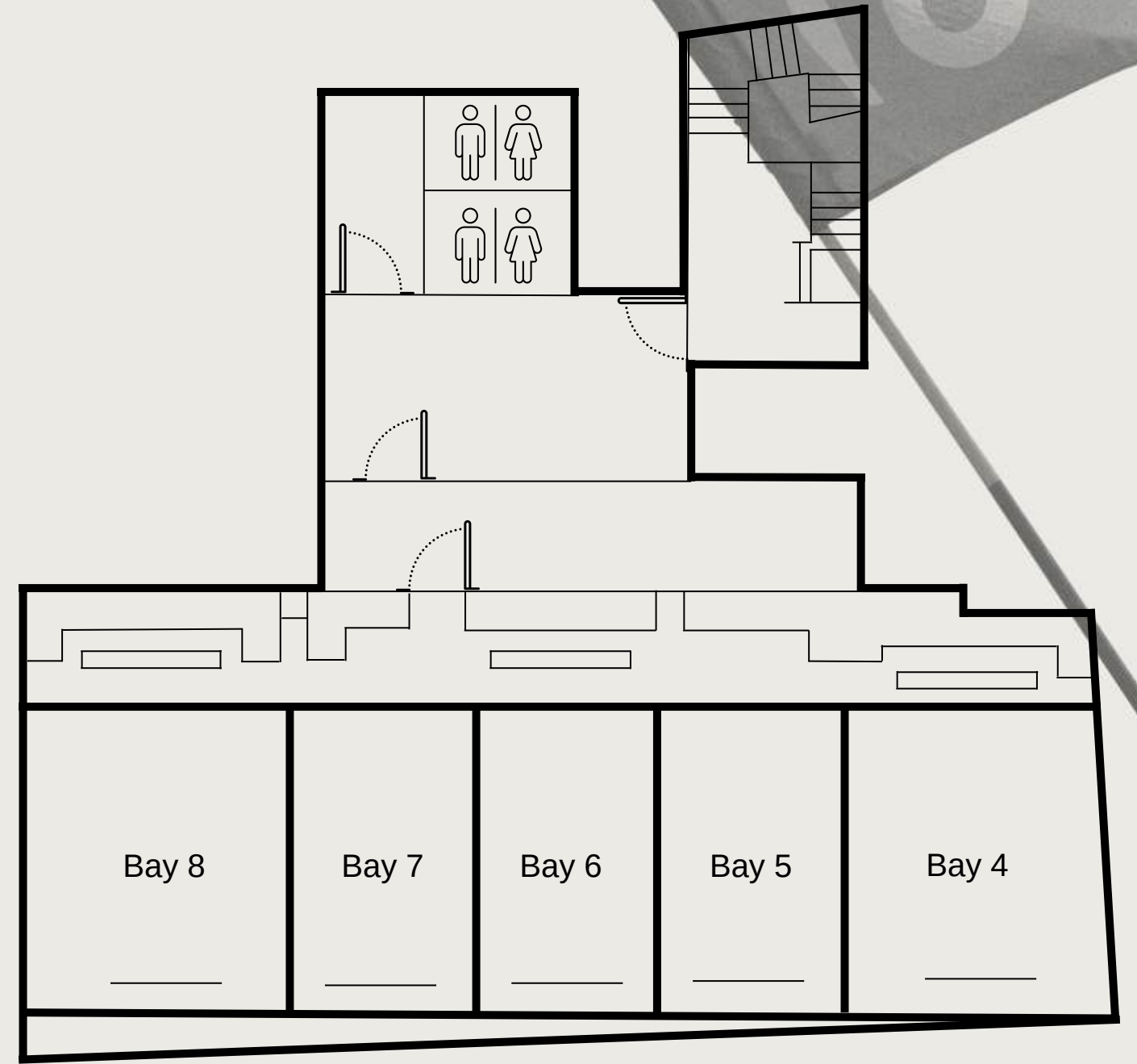
City Floorplan



Ground Floor



Upper Floor



Lower Floor

A photograph of three men sitting on a light-colored sofa in a bar or lounge setting. The man on the left is wearing a white polo shirt and has a tattoo on his left arm. The man in the middle is wearing a black t-shirt and holding a Guinness beer. The man on the right is wearing a grey hoodie. They are all smiling and looking towards each other. In the background, there is a bar counter and a television screen.

“Do I play golf - No.
Would I go back - YES!”

5* Google Review

“Pitch brings a heavy
dose of cool”

Square Mile Magazine

“Service was
exceptional...great
atmosphere with the DJ”

5* Google Review

“ From start to finish the
experience with Pitch was
fantastic. The experience
of golf itself was great,
even for beginners, with
modern facilities & a
relaxed environment.”

5* Google Review

“ Great Venue, staff and
Tech. Love getting down
there any time I can!”

5* Google Review

Please contact:
events@pitchldn.co.uk
020 7628 9424