



Pitch.

Corporate Events

Three London Clubs



SOHO



CITY



WHARF



Pitch Venues



Truly multifunctional spaces, Pitch venues are **perfect for events of all sizes**. From 20 people meetings to 300 person company-wide parties, our sophisticated venues provide a canvas to design and host your event.

Attendees can **play games, socialise and dance** the night away in complete privacy whilst enjoying our amazing food and expertly curated drinks selection.

At Pitch we organise a variety of events...



Company Events

Team Social Events



Company Parties



Employee Rewards

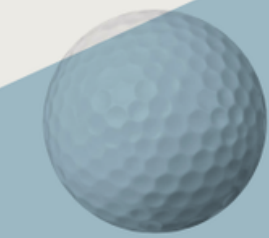
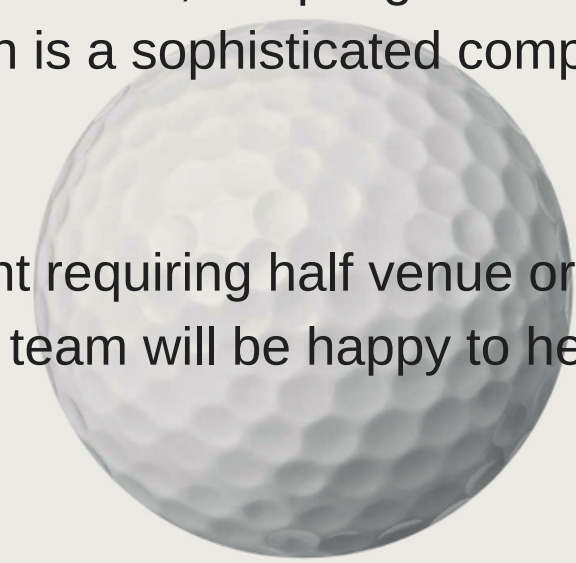




Exclusive Event Hire

With **multiple beautiful venues** to choose from, a selection of add on activities and entertainment for all levels, tempting cocktails, delicious food and much more, Pitch is a sophisticated competitive socialising experience like no other.

If you're looking to organise an event requiring half venue or exclusive hire, enquire now and the team will be happy to help design your night.





“Amazing experience with the team at Pitch Soho, we had our Corporate Christmas Party there and the venue was brilliant. Sophie was particularly helpful during the planning process and was around all night to ensure the evening ran smoothly - couldn't recommend them enough!”

Lara Laws

Corporate Events

Client Events



Product Showcase



Inclusive Golf Days



Activities

We have a range of games available, that are all perfect for mixed ability groups to enjoy together.

Booking full or half venue hire gives the ability to **add on activities** such as:

- Roulette
- Nintendo Switch multiplayer on big 3m screen
- Streets of Neon
- VR headset battles
- Dance mats

Other arcade games hired on request.





The Professional Touch

Take advantage of our expert **PGA Professional golf coaches** when you book your next event. We offer group coaching options which are great for those new to the game or players looking to improve.

Make your event truly memorable by having our **professional photographer** and videographer capture your special moments.

Or looking for that special touch? Why not include some cool golf swag to take away with you?



Food & Drink

Designed exclusively for Pitch, our 18 Greens Menu includes Asian infused dishes which have been curated by the ex-head chef of the Ivy Steve Tonkin. When mixed with delicious cocktails, Japanese lager and a very modern wine list, your guests will be spoilt for choice.



The image shows a modern lounge or bar interior. The ceiling is made of exposed concrete with black track lighting. The walls are primarily wood-paneled, with a bar area in the background. In the foreground, there are several yellow armchairs and a patterned ottoman on a light blue rug. A sign above a doorway in the background says "Members".

“Our whole night was really fun and the desserts were brilliant, lots of unique touches, and such a classy venue, highly recommend it.”

Saria, Collective London

“Fantastic venue, we had our Christmas party here of all ages and abilities and it worked perfectly. Staff were amazing. Will definitely be visiting again.”

Lynn Mills

Soho Events Packages

Perfect for those regular team rewards or the more budget conscious. Our events packages cater for all.
Prices are inclusive of VAT

○ Off-Peak
● Peak



PAR

Two hours of games
Two house drinks
No food
Reservable area

£35pp - £39pp



BIRDIE

Two hours of games
Two house drinks
One '18 Greens' dish
Reservable area

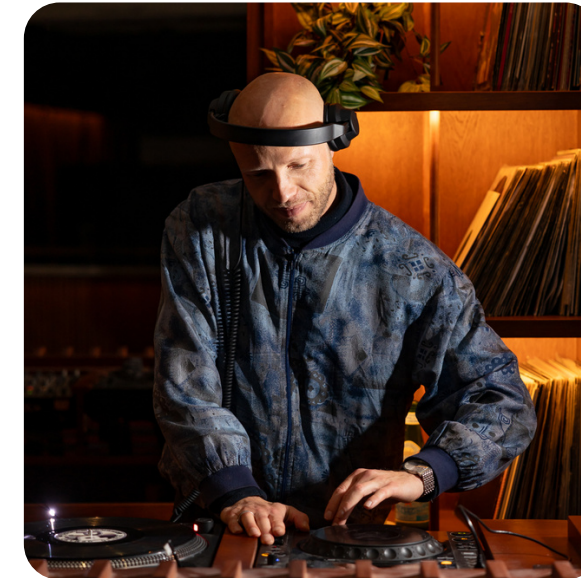
£45pp - £49pp



EAGLE

Two hours of games
Two premium drinks
Two '18 Greens' dishes
Reservable area

£55pp - £59pp



ALBATROSS

Three hours of games
Three premium drinks
Three '18 Greens' dishes
Reservable area

£79pp - £85pp



ACE

Four hours of games
Four premium drinks
Three '18 Greens' dishes
Reservable area

£95pp - £99pp

City Events Packages

Perfect for those regular team rewards or the more budget conscious. Our events packages cater for all.
Prices are inclusive of VAT

○ Off-Peak
● Peak



PAR

Two hours of games
Two house drinks
No food
Reservable area
Use of mezzanine

£35pp - £39pp



BIRDIE

Two hours of games
Two house drinks
Half pizza
Reservable area
Use of mezzanine

£45pp - £49pp



EAGLE

Two hours of games
Two premium drinks
Whole pizza
Reservable area
Use of mezzanine

£55pp - £59pp



ALBATROSS

Three hours of games
Three premium drinks
Whole pizza
Reservable area
Use of mezzanine

£79pp - £85pp

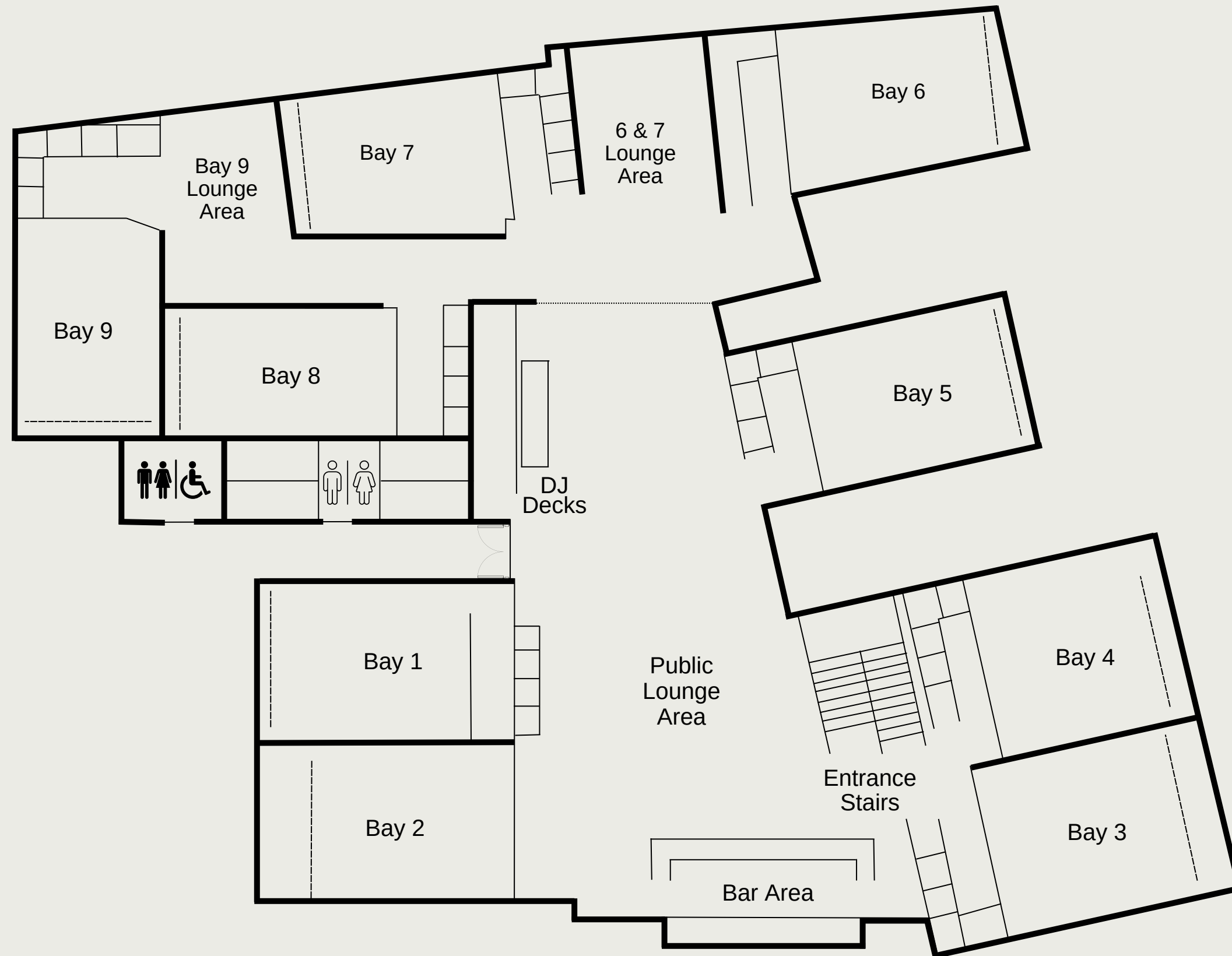


ACE

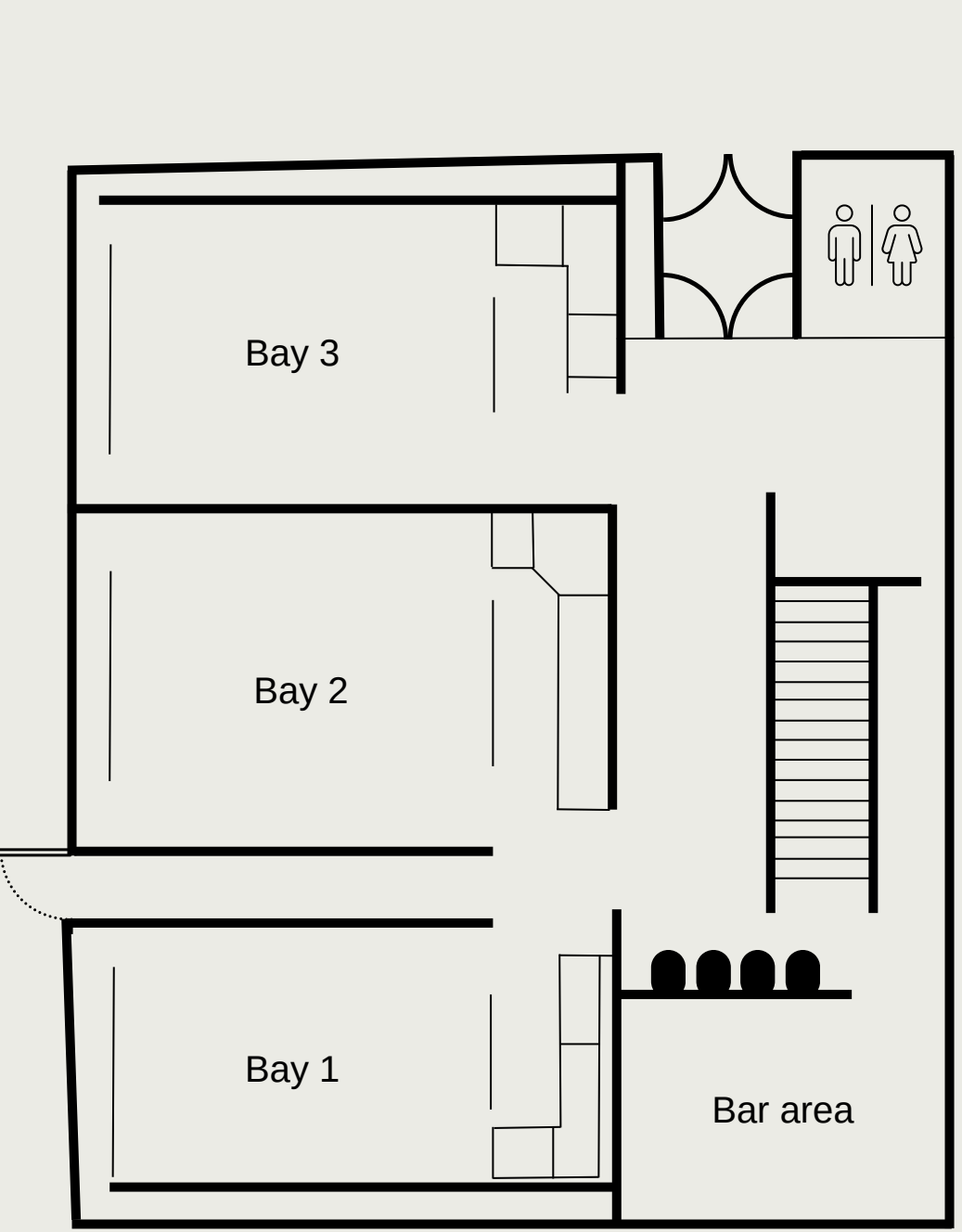
Four hours of games
Four premium drinks
Whole pizza & nibbles
Reservable area
Use of mezzanine

£95pp - £99pp

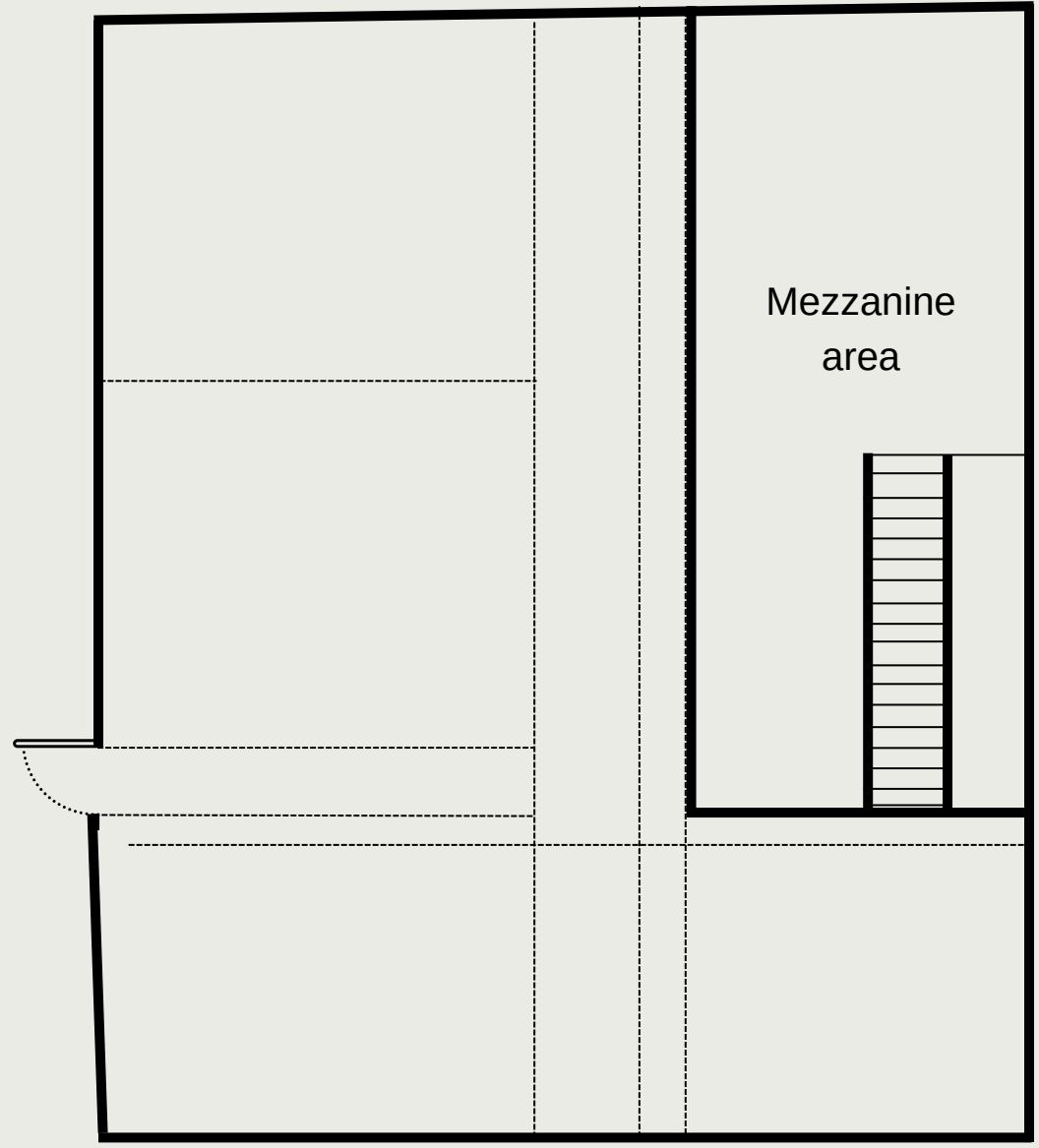
Soho Floorplan



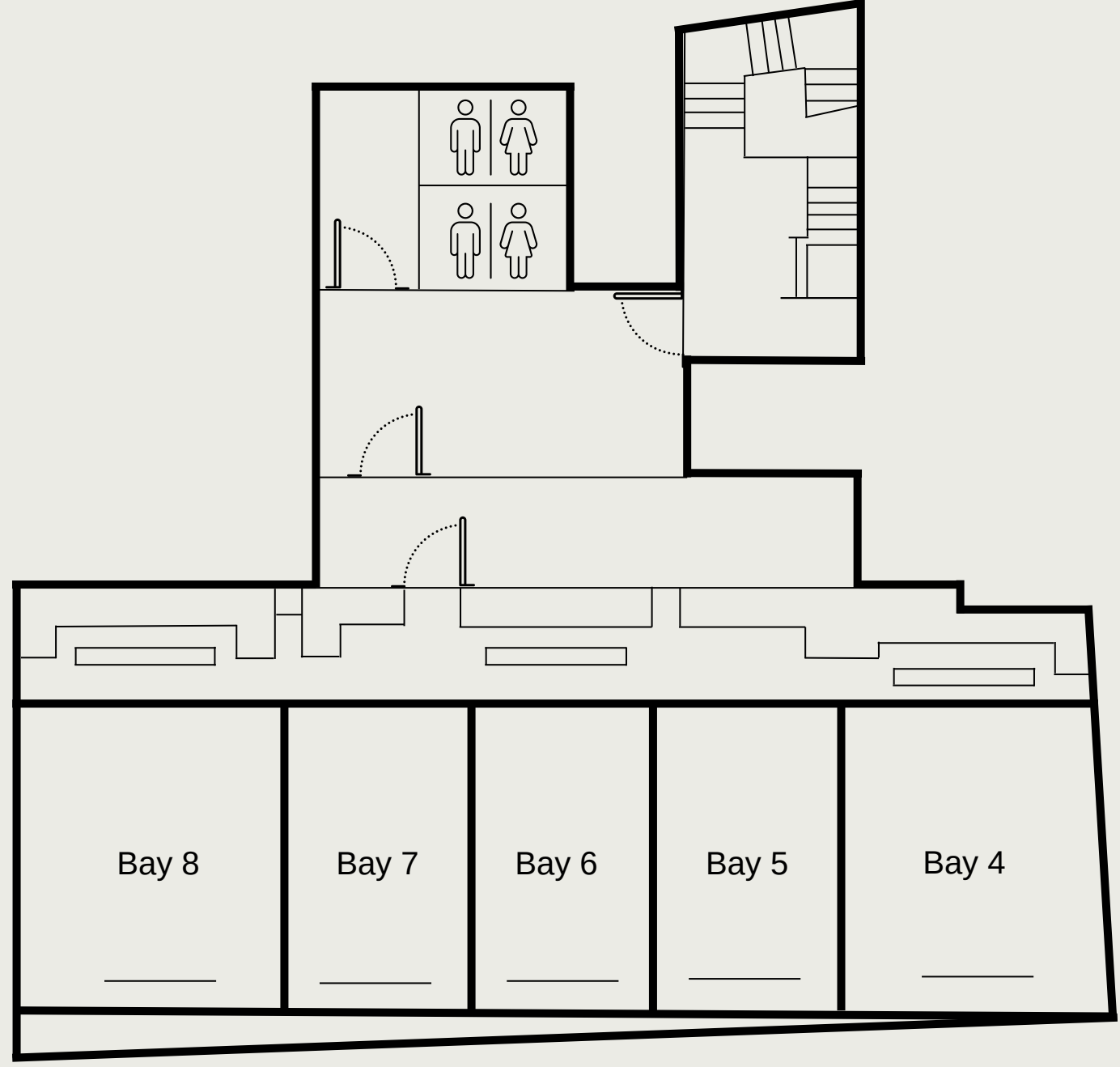
City Floorplan



Ground Floor

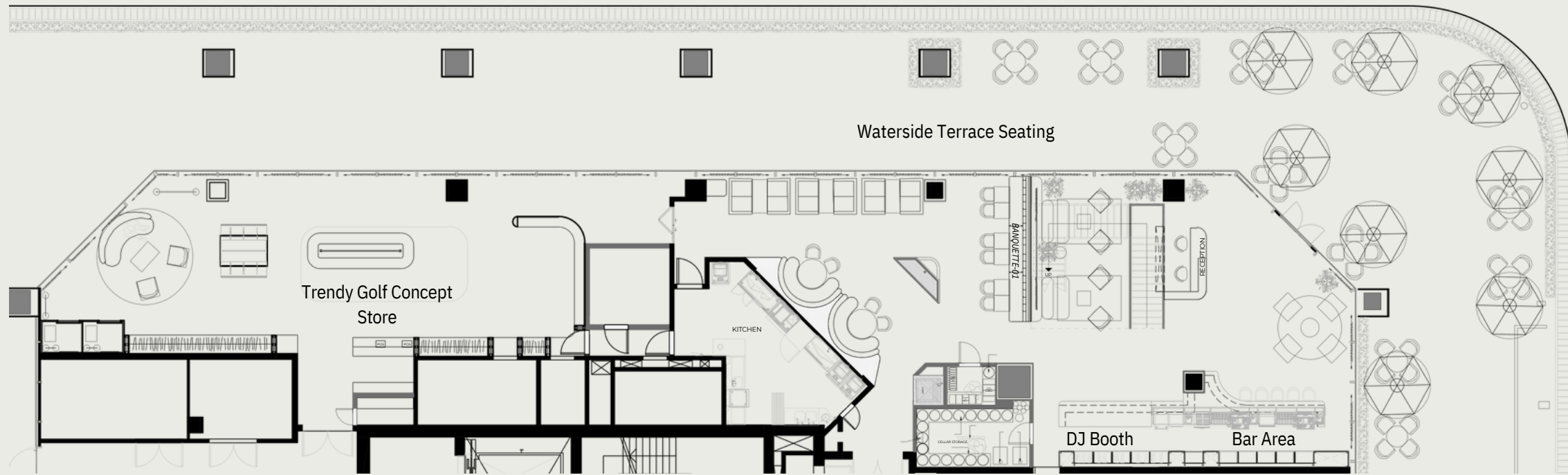


Upper Floor



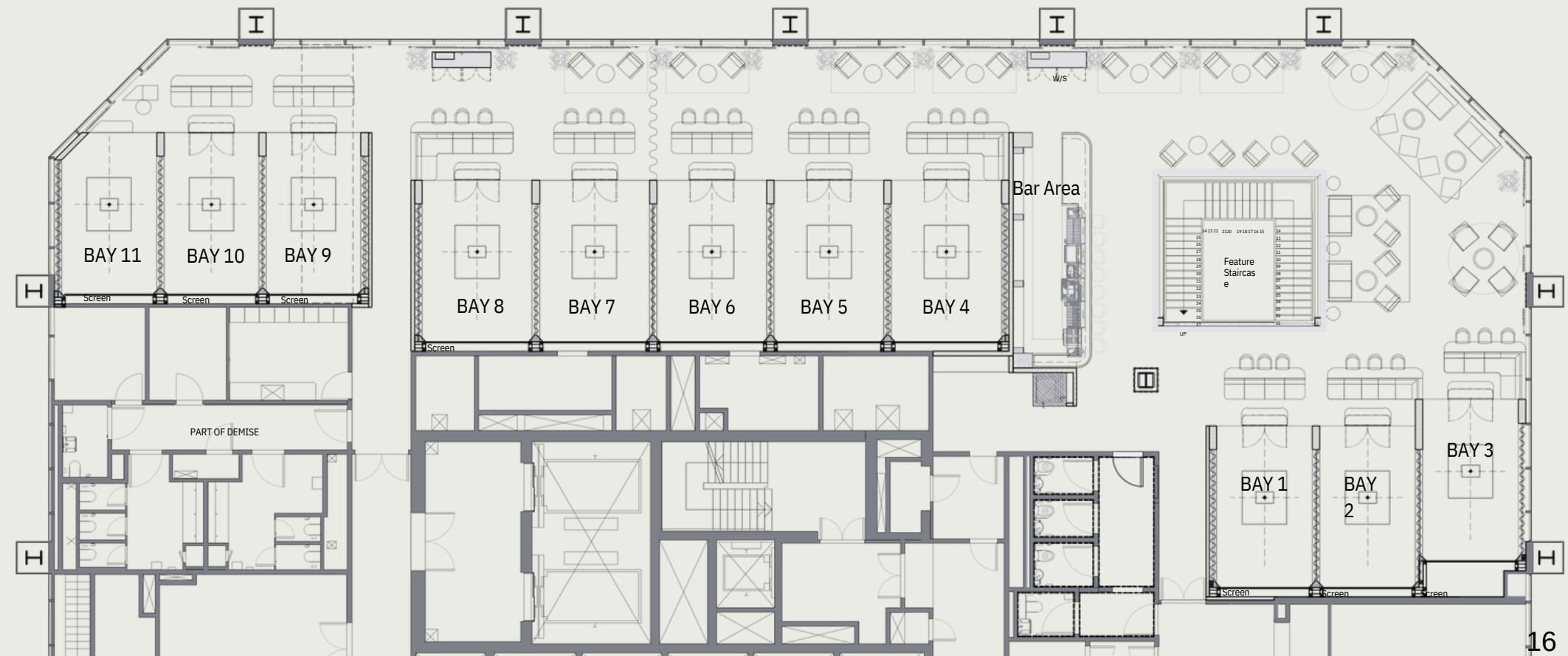
Lower Floor

Wharf Floorplan



Ground Floor

Promenade Floor



Pitch.

Contact Us

For any enquiries, please contact Andy Meaner

andymenear@pitchldn.co.uk

[+44 \(0\) 7838 133 091](tel:+44207838133091)

Soho City Canary

12 Meard St,
London
W1F 0EQ

62 Bishopsgate,
London
EC2N 4AW

30 Churchill Place
London
E14 5EU





Pitch.

Thank You

GRENSON
ENGLAND 1866
Men's Shoes
Women's Shoes
Shoe Repair
Shoe Care
Socks
Accessories
grenson.com

wework

Pitch.

ROYALTY
MANSIONS

wework

wework

wework
WEEK-END
WEEK-TIME
10-18