



Members

Pitch.

Corporate Wellbeing & Events Brochure

# Three London Clubs



SOHO



CITY



WHARF



# A Club Where Everyone is Welcome

From beginners to seasoned players, we've designed our venues to ensure **everyone has fun.**

Each Clubhouse features an Academy for **lessons and practice**, social bays, bar and lounges that can be booked for anything from **group lessons to team rewards, client entertainment or full venue hire.**

With a bespoke food and cocktail menu, organic wines and craft beers, our members and their guests alike enjoy the Pitch experience.





# Employee Wellbeing

Pitch recognises the **importance of employee wellbeing** and offers various initiatives to help companies support their employees.

We offer company **group golf lessons** and **beginners programmes** that remove the barriers of a traditional corporate golf membership and make the sport more accessible.

Our **inclusivity and diversity initiatives and partnerships** include:

- Women's Beginner Golf Academy in partnership with adidas
- Women's golf events
- Get into Golf programmes
- Black British Golfers events



# Golf For Good

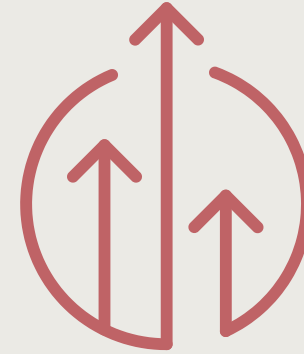
Golf is changing for the better and Pitch is at the forefront of the revolution.

We can provide your employees with mental wellbeing benefits helping individuals to improve confidence, self-esteem and anxiety levels.

Your future in golf is healthy.



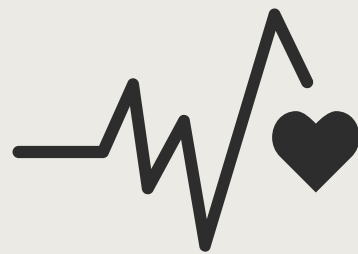
Exercise and golf boosts immunity and is associated with better strength and balance.



Fosters a healthy sense of competition.



Improves business relationships and networking.



Golfers live 5 years longer than non-golfers.<sup>1</sup>



Teaches accuracy, focus and concentration.



24% less likely to report a mental health condition than those who do not play golf.



# CORPORATE MEMBERSHIP





# Corporate Membership

Blue chip to start up, CEO to intern, **our corporate membership has something for everyone.**

Not only will you and your colleagues have a place where you can **escape the formal office environment** and enjoy our state of the art golf simulators, but also a space to **host clients, office parties** and participate in **group lessons.**

Whether you are looking to spend an afternoon on the fairways, or simply have a meeting to enjoy the food and drink on offer, we provide a premium and exclusive environment to utilise for **business and well-being.**

# How Corporate Works

1

Get in touch and we will create your bespoke membership; choose to cover all costs or an employee part payment scheme.

2

Pitch will set-up your membership and provide a sign-up link that can be shared with employees to create their accounts.

3

Employees can immediately download the Pitch booking app and start making bookings right away according to the chosen Corporate Membership benefits.

4

Select any add-ons such as beginner programmes, group lesson packages, and/or individual private lessons with our experienced PGA Professionals.

5

Collect your membership cards at any of our clubs and your team members are ready to Practice, Play and Entertain.





# EVENTS



# Events

Truly multifunctional spaces, Pitch venues are **perfect for events of all sizes**. From 20 people meetings to 300 person company-wide parties, our sophisticated venues provide a canvas to design and host your event.

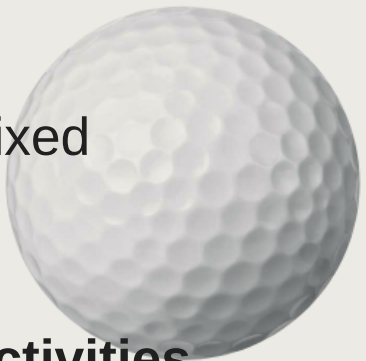
Attendees can **play games, socialise and dance** the night away in complete privacy whilst enjoying our amazing food and expertly curated drinks selection.





# Activities

We have a range of games available that are perfect for mixed ability groups to enjoy together.



Booking full or half venue hire gives the ability to **add on activities** such as:

- Roulette
- Nintendo Switch multiplayer on big 3m screen
- Karaoke
- Streets of Neon
- Photo booth
- Dance machine



# Company Events



## Team Social Events

Packages include food and drink, a variety of games to suit all abilities and our resident DJ.



## Employee Rewards

Play, eat, drink and socialise in style as we offer bespoke and premium packages to ensure your most successful employees are rewarded.



## Exclusive Space Hire

Private events, exclusive parties, company meetings, brand and product launch events, the venue offers you a blank canvas to setup and layout how you wish.



## Company Parties

Champagne on arrival followed by great food and interactive games, Pitch venues are a great way to celebrate company success in style.

# Corporate Events



## Golf Days

Client entertainment, lessons, practice, team play and workspace.



## Client Events

Entertain in a variety of ways; deliver a presentation, utilise the UHD projectors, organise a social activity or wine and dine your top clients.



## Product Showcase

Our diverse spaces offer a range of layout and setup possibilities. Take advantage of the ultra modern technology, including multiple 3m projector screens, and quality speakers.





# The Professional Touch

Take advantage of our expert **PGA Professional golf coaches** when you book your next event. We offer group coaching options which are great for those new to the game or players looking to improve.

Make your event truly memorable by having our **professional photographer** and videographer capture your special moments.

Or looking for that special touch? Why not include some cool golf swag to take away with you?



A modern indoor golf simulator room. The room features a curved bar with a white marble top and a wooden base. A large screen displays a golf course scene with the text "FORESIGHT SPORTS" and "NETPLAY". Three hexagonal buttons labeled "PLAY", "COMPETE", and "IMPROVE" are visible on the screen. A Callaway golf bag is on the left. A large circular mirror on the wall reflects the room. A quote is overlaid on the right side of the image.

“Perfect venue for a corporate event. We hired the whole venue for an event and it was perfect and so much fun!”

Erna Group

# Food & Drink

Our Asian infused dishes have been curated by the ex-head chef of the Ivy Steve Tonkin. When mixed with delicious cocktails, Japanese lager and a very modern wine list, your guests will be spoilt for choice.



A photograph of a modern lounge interior. The space features a bar with a wooden facade and a backlit counter. In the foreground, there are several yellow armchairs and a patterned ottoman on a light blue rug. The ceiling is exposed concrete with track lighting. A sign above a doorway in the background reads "Members".

“Our whole night was really fun and the desserts were brilliant, lots of unique touches, and such a classy venue, highly recommend it.”

Saria, Collective London

“Great mix of games and we were able to hang around and enjoy the cocktails after our booking which we really appreciated.”

James, Arbutnot

# Soho Events Packages

Perfect for those regular team rewards and smaller groups, our events packages cater for all. Prices are inclusive of VAT. For venue hire get in touch and we'll create a bespoke package with you.



## PAR

Two hours of games  
Two house drinks  
No food  
Private area

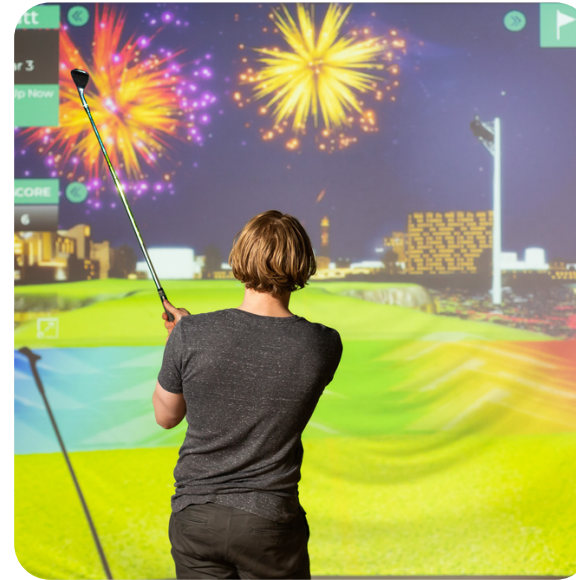
From:  
**£35 pp**



## BIRDIE

Two hours of games  
Two house drinks  
One '18 Greens' dish  
Private area

From:  
**£45 pp**



## EAGLE

Two hours of games  
Two premium drinks  
Two '18 Greens' dishes  
Private area

From:  
**£55 pp**



## ALBATROSS

Three hours of games  
Three premium drinks  
Three '18 Greens' dishes  
VIP private area

From:  
**£79 pp**



## ACE

Four hours of games  
Four premium drinks  
Three '18 Greens' dishes  
VIP private area

From:  
**£95 pp**

# City Events Packages

Perfect for those regular team rewards and smaller groups, our events packages cater for all. Prices are inclusive of VAT. For venue hire get in touch and we'll create a bespoke package with you.



## PAR

Two hours of games  
Two house drinks  
No food  
Private area

From:  
**£35 pp**



## BIRDIE

Two hours of games  
Two house drinks  
Half pizza  
Private area

From:  
**£45 pp**



## EAGLE

Two hours of games  
Two premium drinks  
Whole pizza  
Private area

From:  
**£55 pp**



## ALBATROSS

Three hours of games  
Three premium drinks  
Whole pizza  
VIP private area

From:  
**£79 pp**

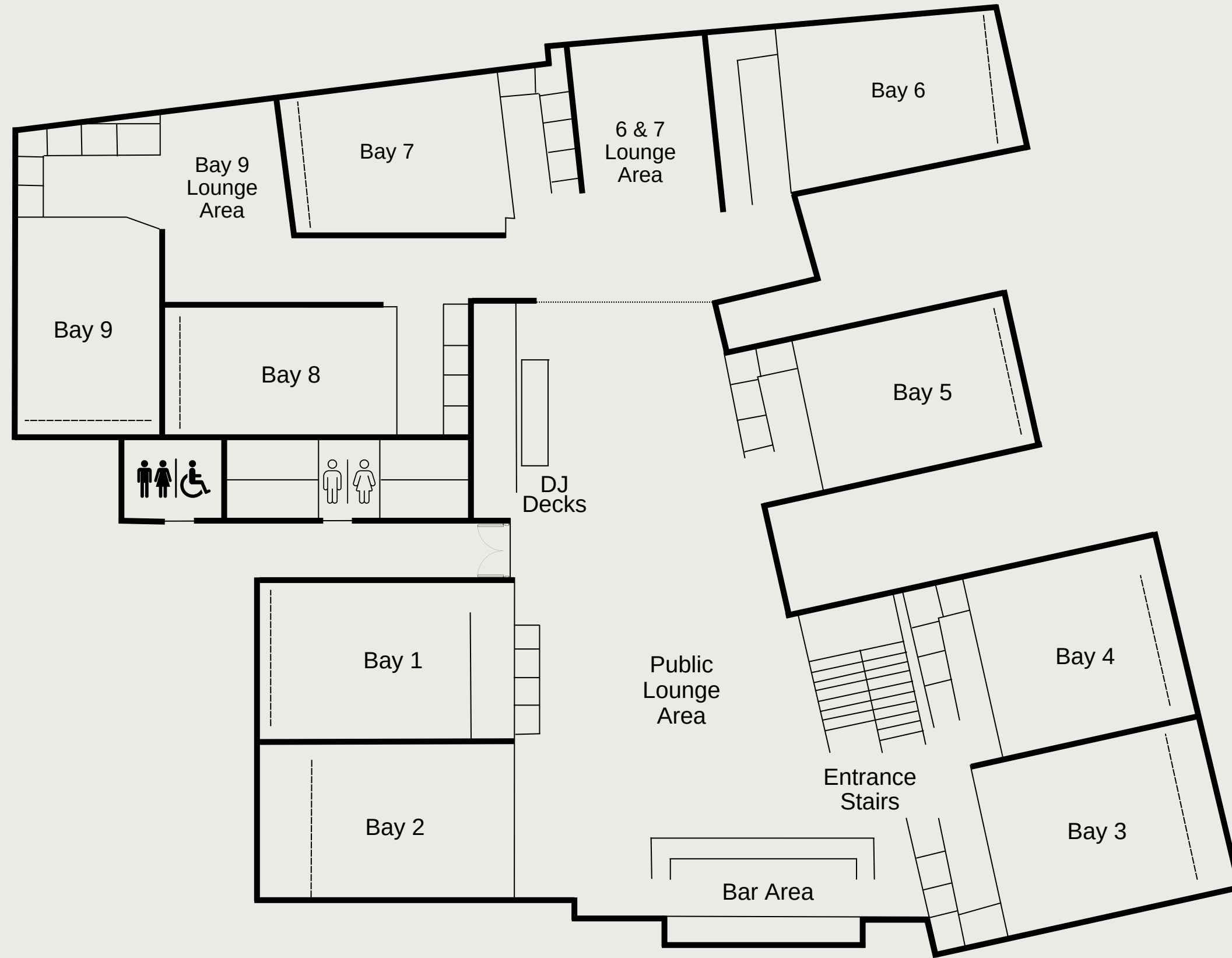


## ACE

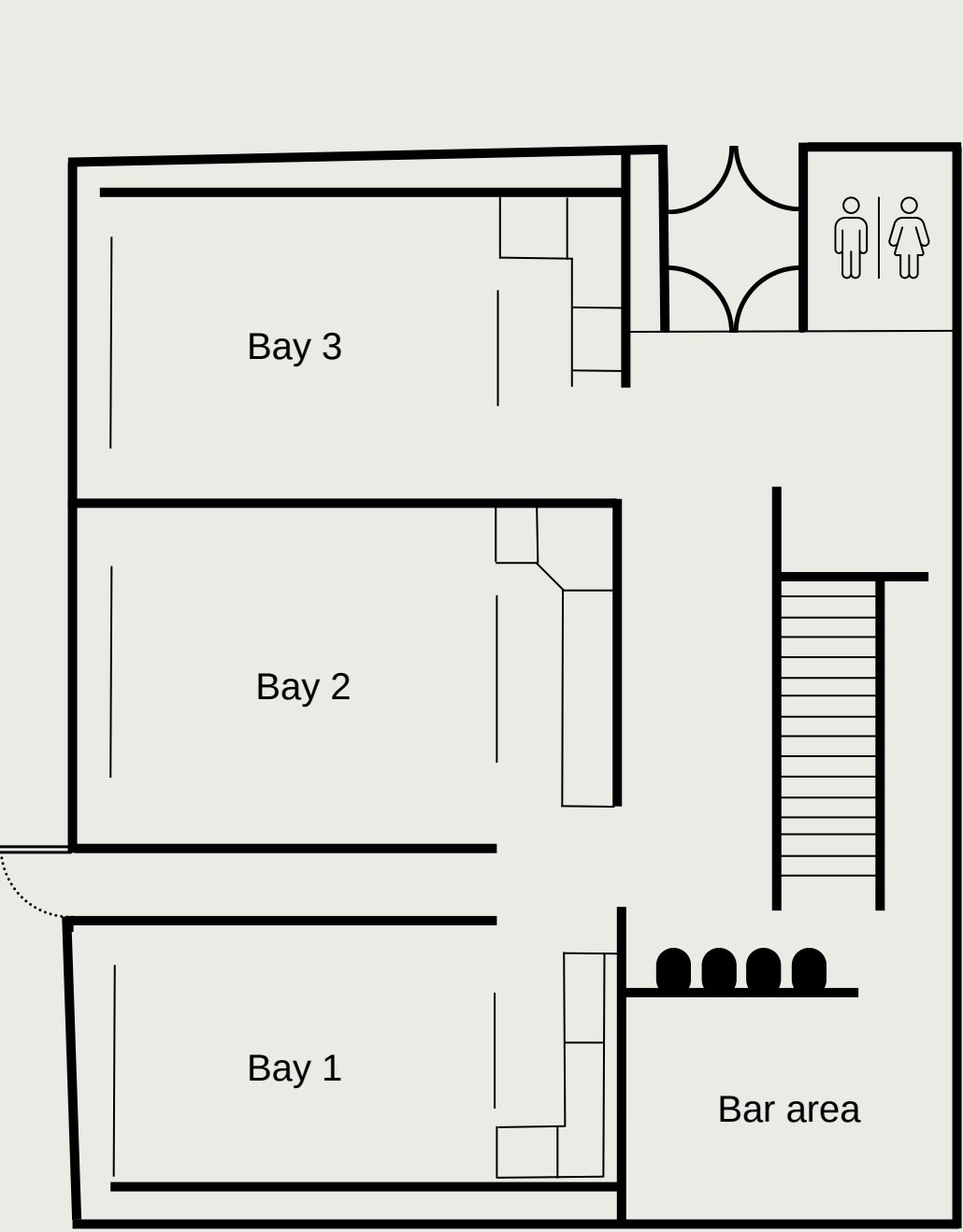
Four hours of games  
Four premium drinks  
Whole pizza & nibbles  
VIP private area

From:  
**£95 pp**

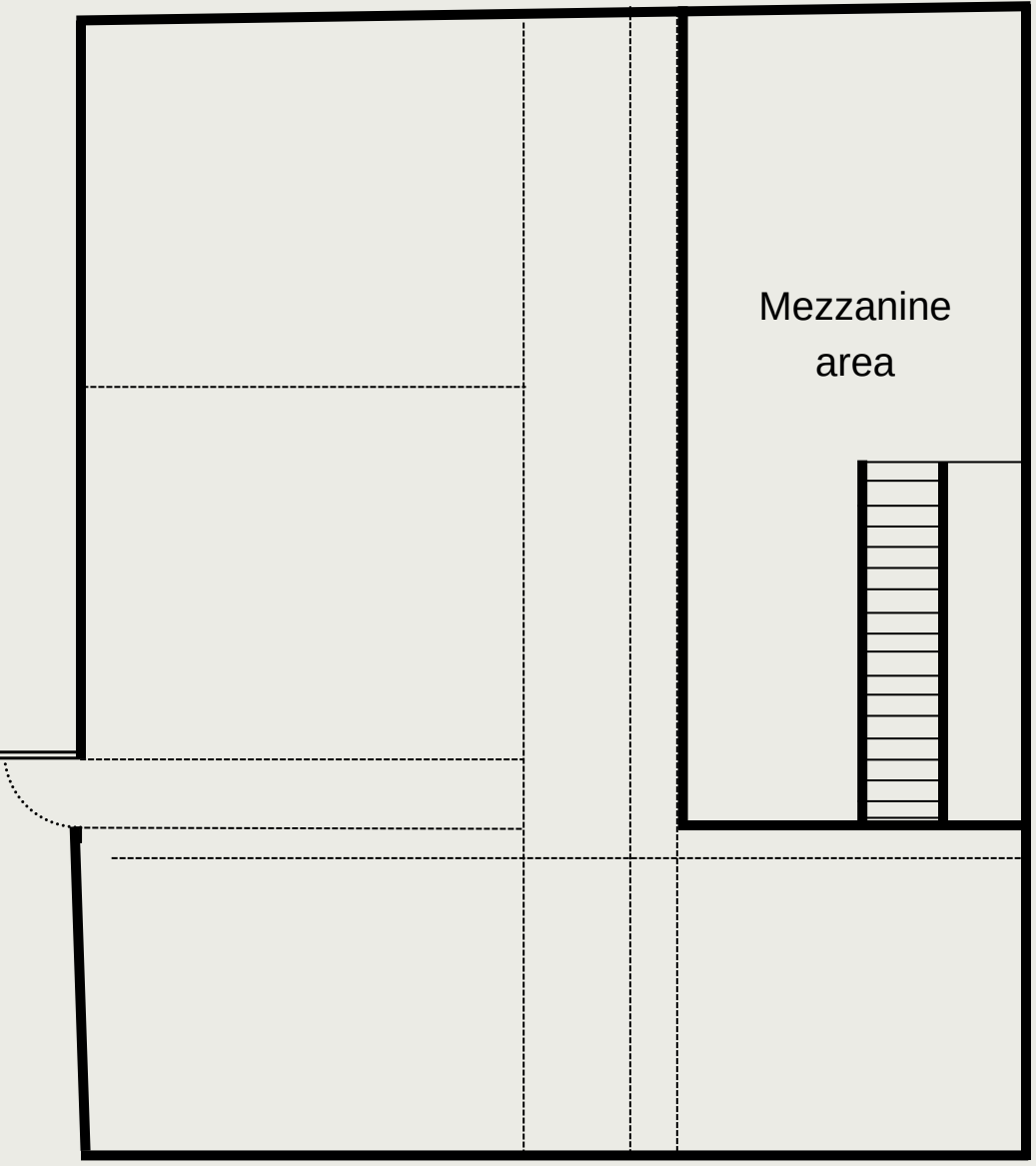
# Soho Floorplan



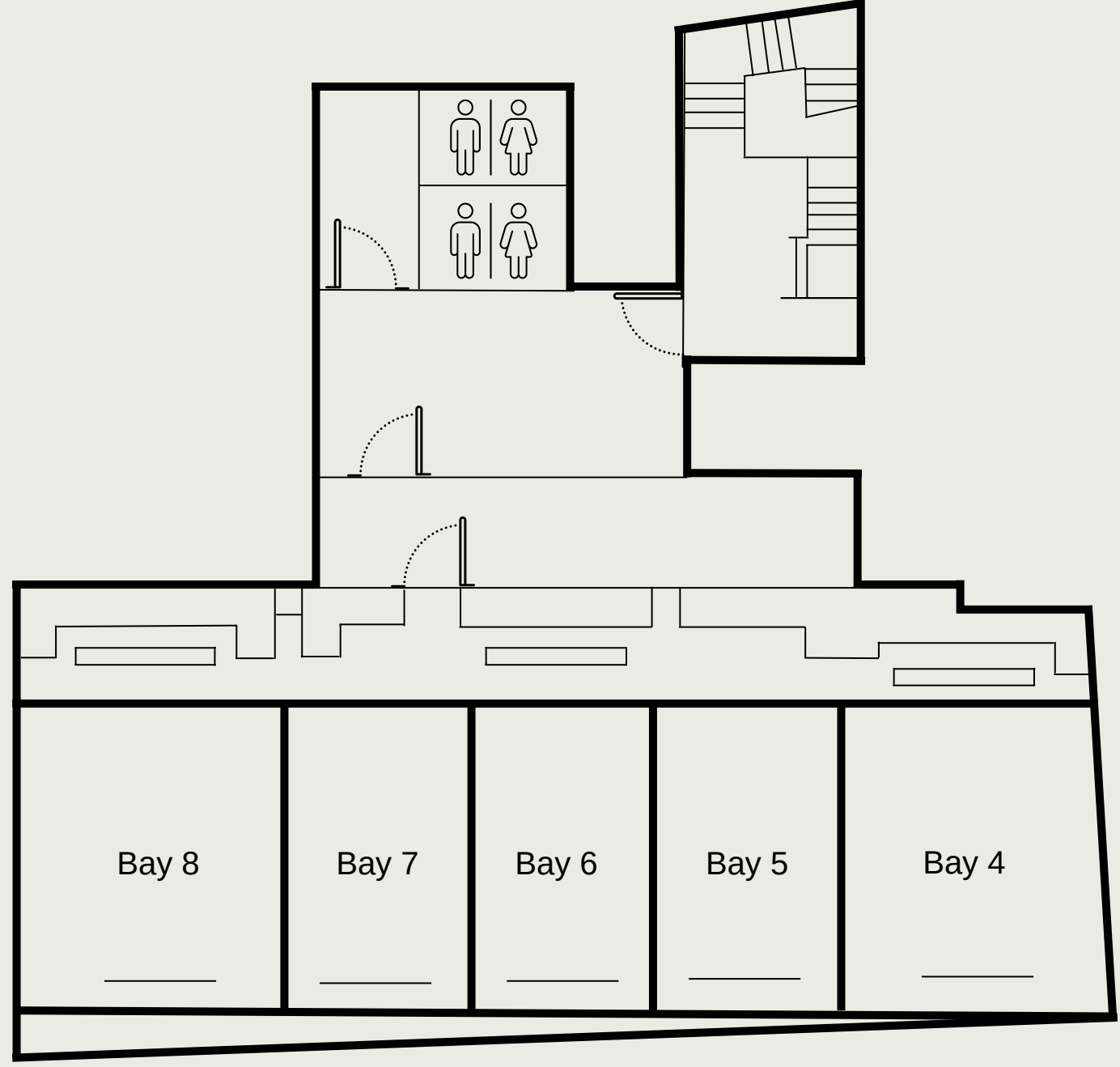
# City Floorplan



Ground Floor

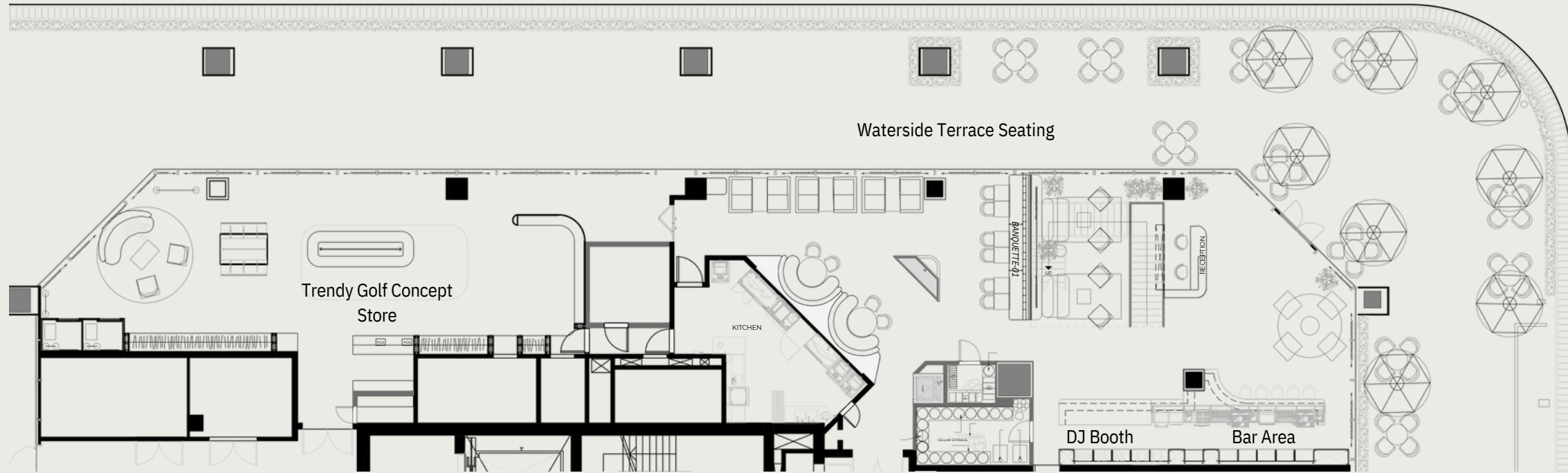


Upper Floor



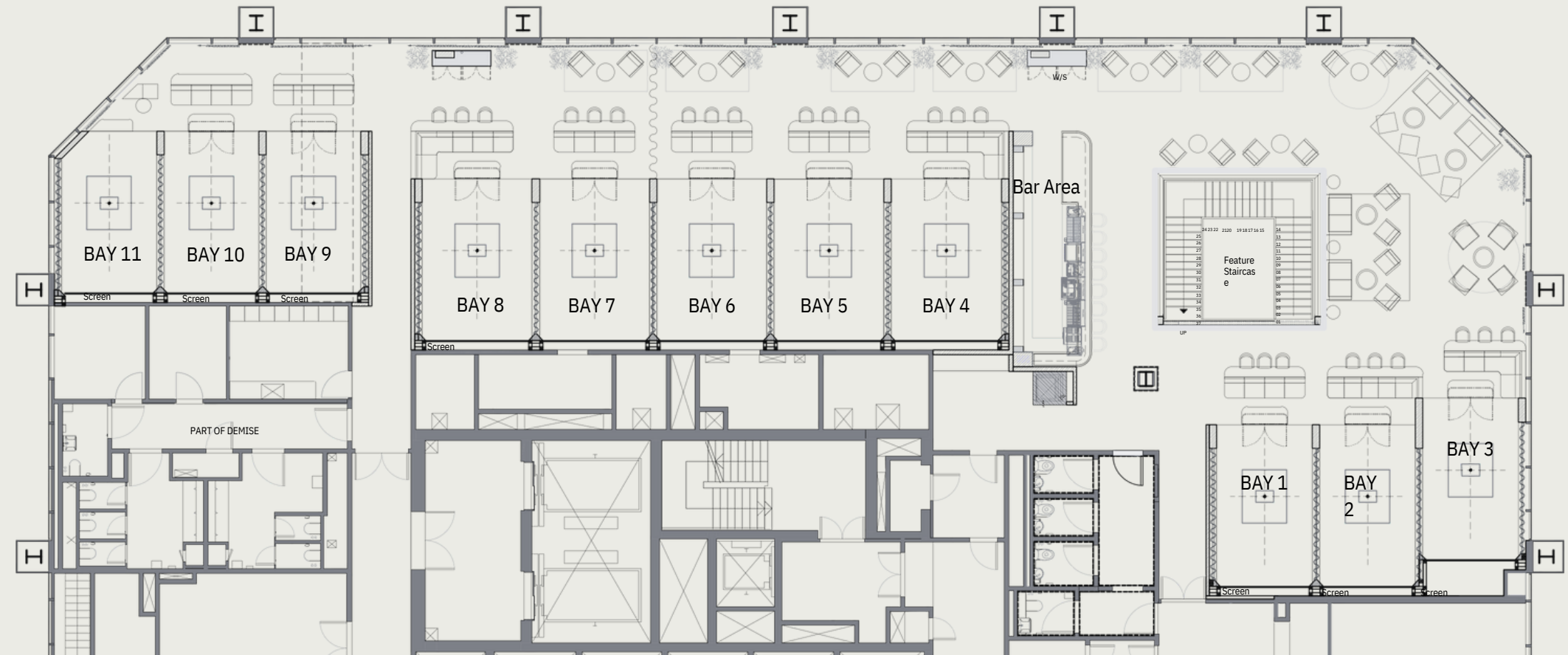
Lower Floor

# Wharf Floorplan



Ground Floor

Promenade Floor



# Pitch.

## Contact Us

For any enquiries, please contact Andy Meaner

[andymenear@pitchldn.co.uk](mailto:andymenear@pitchldn.co.uk)

[+44 \(0\) 7838 133 091](tel:+44%207838%20133%20091)

### Soho

12 Meard St,  
London  
W1F 0EQ

### City

62 Bishopsgate,  
London  
EC2N 4AW

### Canary

TBC



Pitch.

Thank You

**GRENSON**  
ENGLAND 1866  
Men's Shoes  
Women's Shoes  
Shoe Repair  
Shoe Care  
Socks  
Accessories  
grenson.com

wework

Pitch.

ROYALTY  
MANSIONS

wework

wework

wework  
WEEK-END  
WEEK-TIME  
10-18