



# Pitch.

Casual Events and Bookings

# The Modern Way to Play.



## Play

Unlike real golf, anyone can win! Even if you have never swung a club before, with our built in handicapping software the office pro can be humbled by the novice beginner.



## Drink

From Spicy Margaritas, Triple Bogey Negronis and Pi-NO Coladas we have a varied cocktail list from our new menu to suit all tastes. Alternatively, try our organic wines or selection of refreshing craft and draught beers.



## Eat

Feeling hungry? Enjoy food from our modern Asian kitchen in Canary Wharf and Soho, or a hearty Italian pizza from Pizza Pilgrims at our City venue.



## Enjoy

Pitch's slick design and carefully curated soundtrack provide the perfect setting for your evening. Enjoy our lounges both before and after your booking at no extra charge.

# Three. London. Clubs.

## Pitch.Soho

Nestled down quiet Meard Street, our Soho Clubhouse is both a golfing sanctuary from the outside world and in the heart of the action. Spread over 8,000 sqft with nine versatile bays and a chic bar, it's a flexible events space built around golf but offering so much more.

## Pitch.City

A stone's throw from Liverpool Street on Bishopsgate, there's no better venue in the City than our original clubhouse. With eight bays, a bar and mezzanine lounge this club has it all.

## Pitch.Wharf

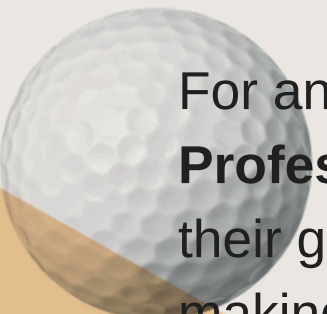
Our largest club yet and new flagship venue, spanning 14,500 sqft, features eleven bays, shuffleboard tables, a Trendy Golf concept store, two bars, and a spacious outdoor terrace.



# Our Games

Experience the modern way to play golf with **virtual games** like Party Putt, Cannon Bowl, and Streets of Neon. Perfect for all skill levels, Trackman games offer challenges from precision tasks to fun showdowns like closest to the pin.

Elevate your event at Pitch with full or half-venue hire, offering activities like **shuffleboard**, **roulette**, **Nintendo Switch** on a 3m screen, and more.



For an added touch, enjoy expert coaching from our **PGA Professionals**—perfect for beginners or those looking to refine their game. Custom arcade games are also available on request, making it ideal for mixed-ability groups.



# Shuffleboard

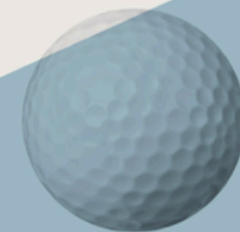
Alongside our interactive bays and vibrant social spaces, Pitch Wharf is levelling up with the addition of **three shuffleboard tables!**

This exciting new addition brings more ways to compete, connect, and unwind. Perfect for elevating your events, shuffleboard adds a unique blend of strategy and social play to any occasion.\*

\*only available at Canary Wharf



# Employee Wellbeing and Rewards



At Pitch Wharf, we offer a fresh alternative to traditional golf course events. Whether it's a team-building day, company party, product showcase or client event, we deliver a memorable experience that's enjoyable for everyone.

Prioritising employee well-being benefits both you and your team, reducing stress and fostering a positive work environment for employees to thrive together. Our unique activities and dynamic space make it an ideal setting for this.

# Food & Drink



## JIYŪ

Available exclusively at Canary Wharf and Soho, featuring a range of Asian inspired dishes.



## Cocktails

Served at all of our Clubhouses, try our delicious cocktail menu.



## Pizza

A great food option at our City clubhouse, providing the perfect course side snack.

A photograph of three men sitting on a light-colored sofa in a bar or lounge setting. The man on the left is wearing a white polo shirt and has a tattoo on his left arm. The man in the middle is wearing a black t-shirt and holding a Guinness beer. The man on the right is wearing a grey hoodie. They are all smiling and looking towards each other. In the background, there is a bar counter and a television screen.

“Do I play golf - No.  
Would I go back - YES!”

5\* Google Review

“Pitch brings a heavy  
dose of cool”

Square Mile Magazine

“Service was  
exceptional...great  
atmosphere with the DJ”

5\* Google Review

“ From start to finish the  
experience with Pitch was  
fantastic. The experience  
of golf itself was great,  
even for beginners, with  
modern facilities & a  
relaxed environment.”

5\* Google Review

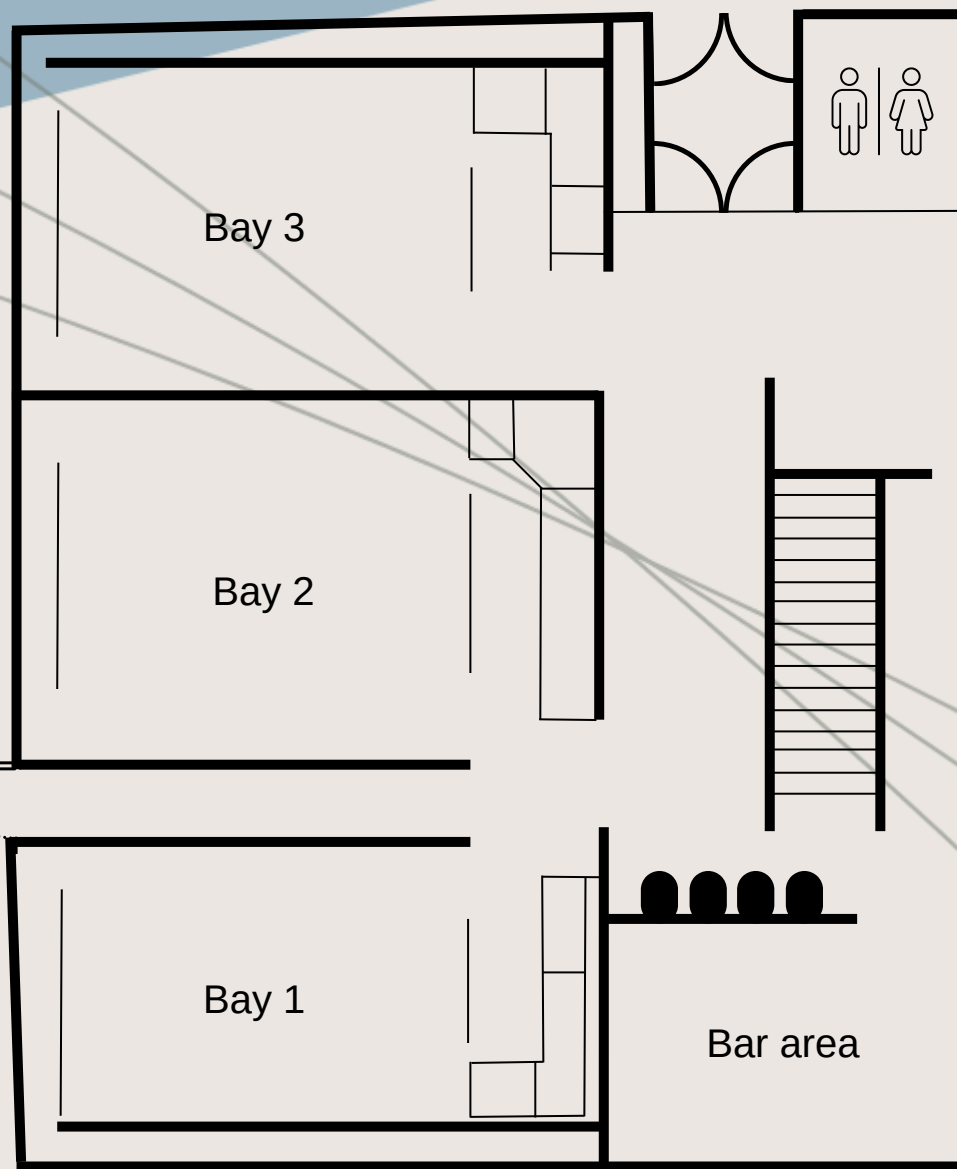
“ Great Venue, staff and  
Tech. Love getting down  
there any time I can!”

5\* Google Review

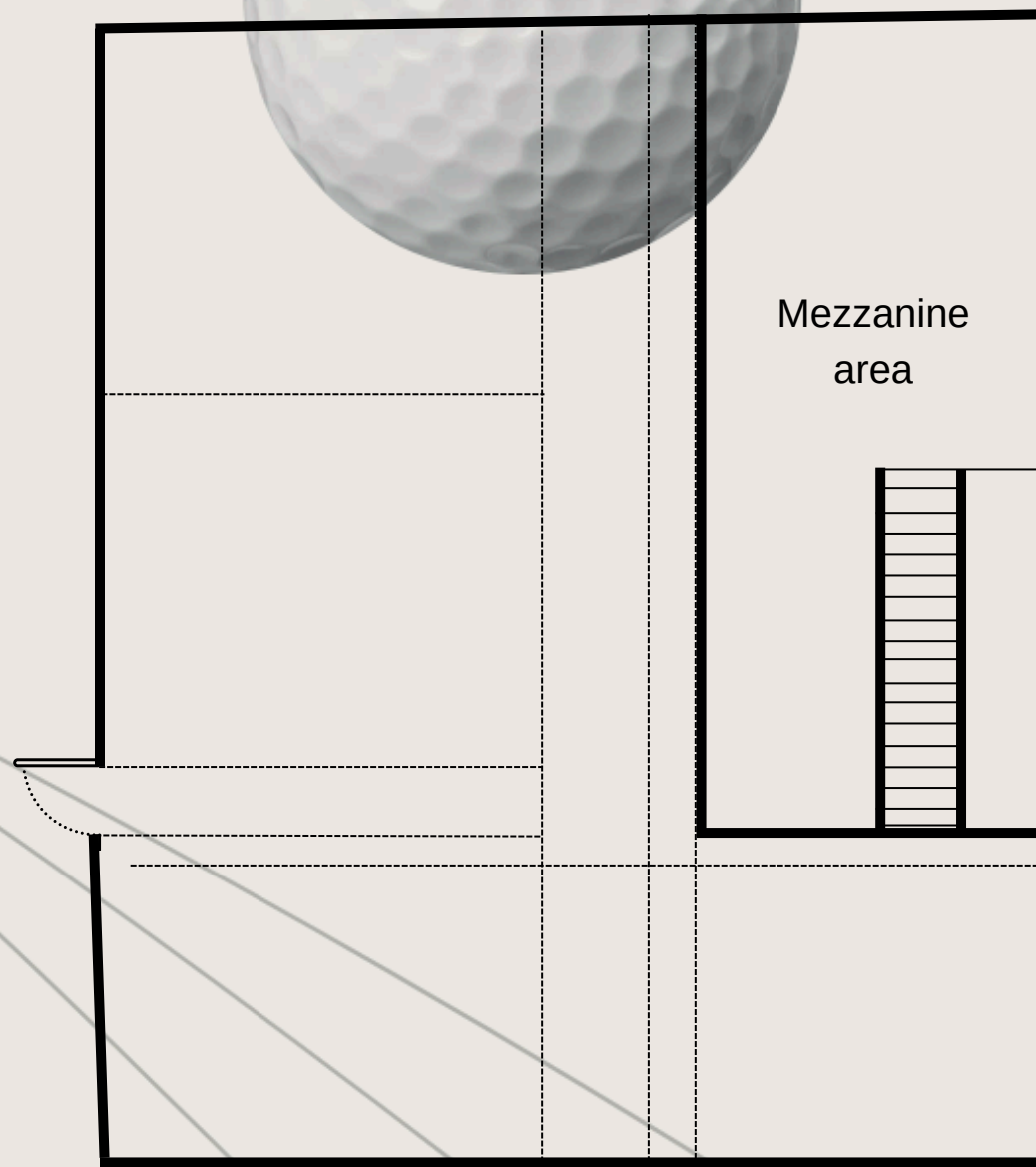
# Soho Floorplan



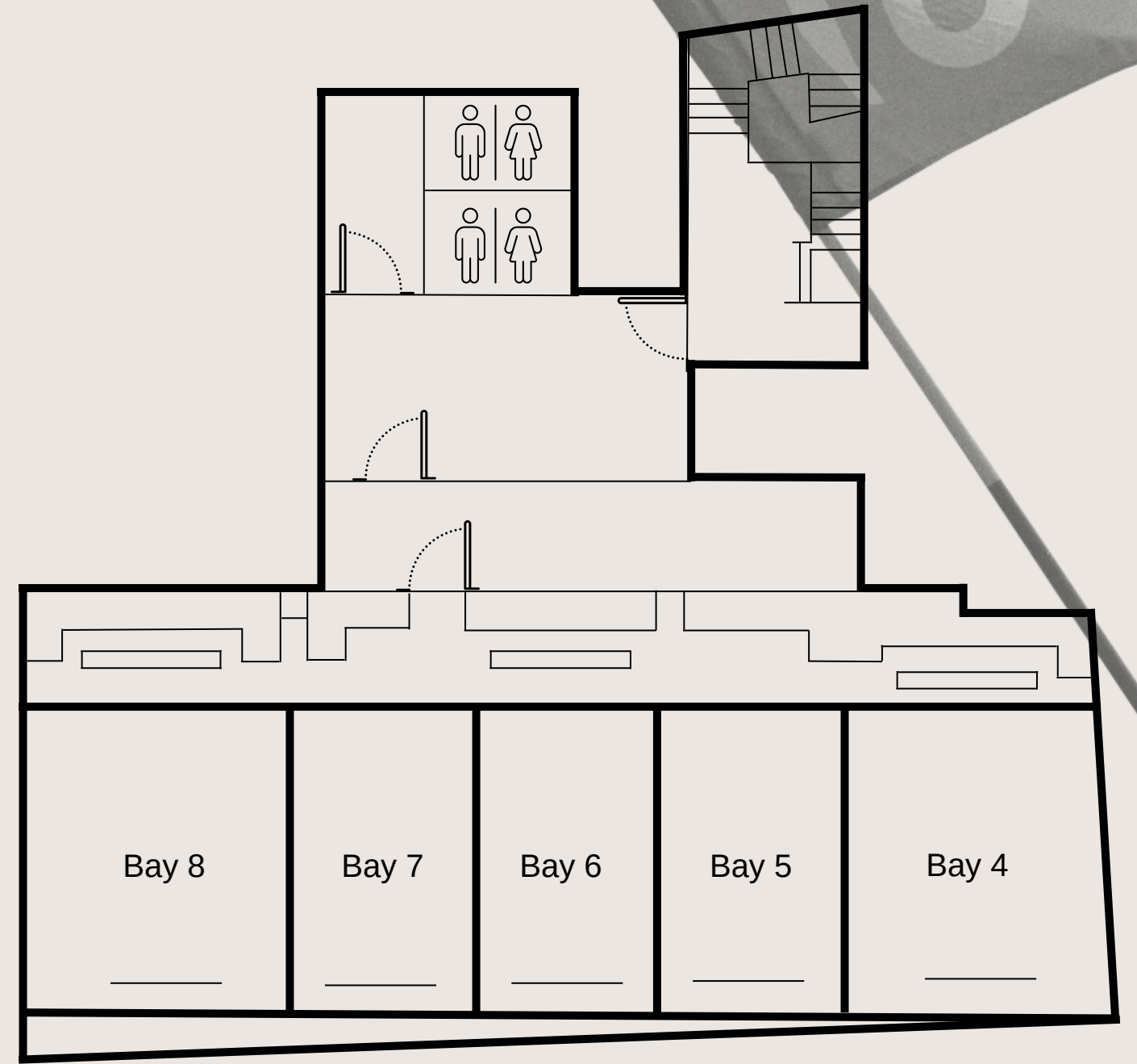
# City Floorplan



Ground Floor



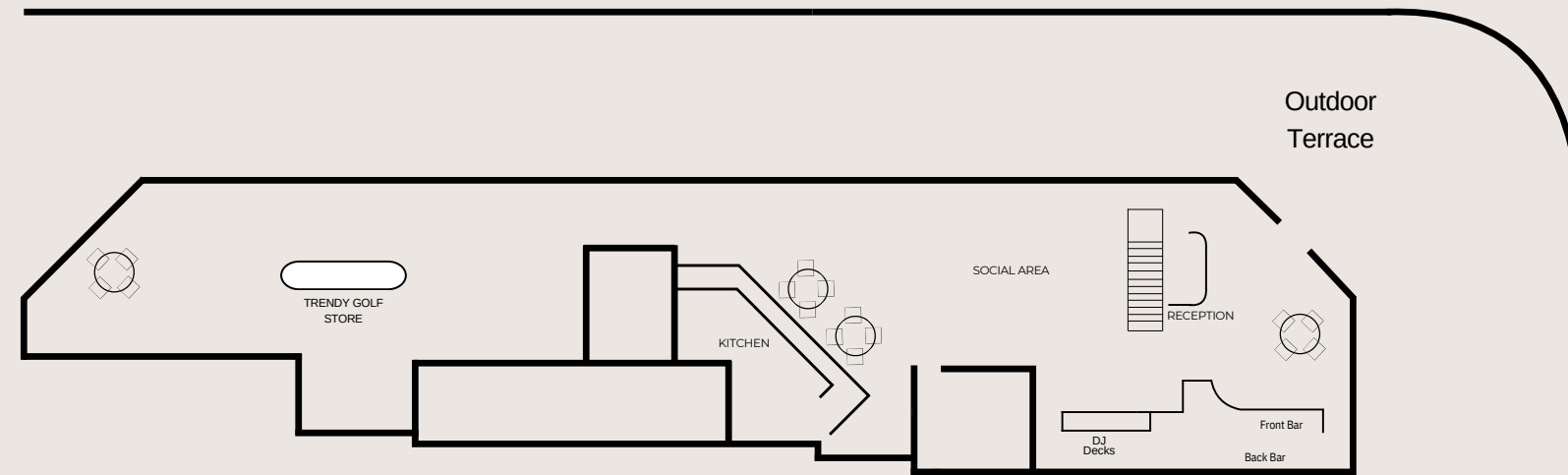
Upper Floor



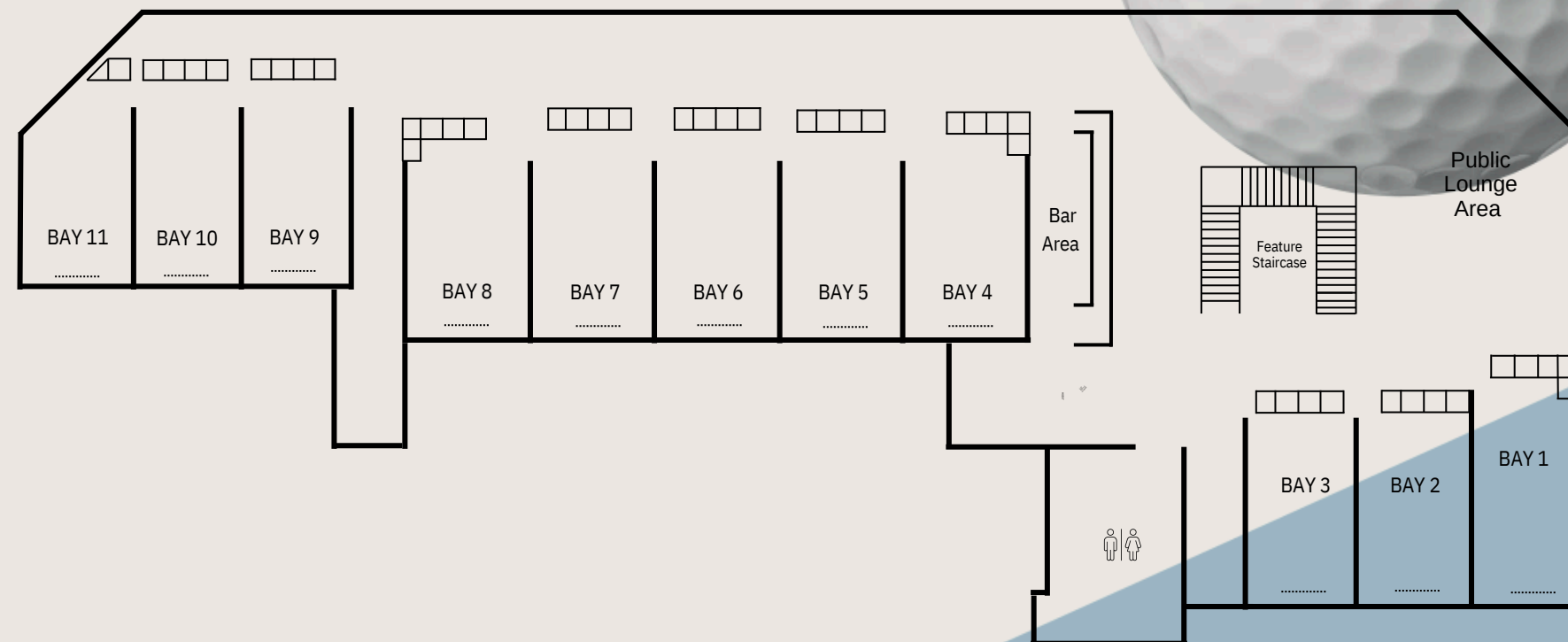
Lower Floor

# Canary Wharf Floorplan

## Lower Ground Floor



## Ground Floor



Covering 14,500 square feet, this state-of-the-art space includes:

- Eleven Trackman-powered bays
- An exclusive members' area
- Two bars and a restaurant
- A Trendy Golf concept store
- Riverside terrace with seating
- Three Shuffleboards



Please contact:  
[events@pitchldn.co.uk](mailto:events@pitchldn.co.uk)  
020 7628 9424